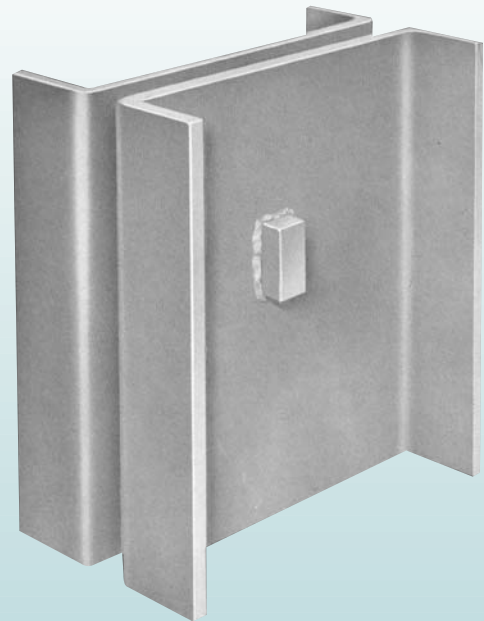
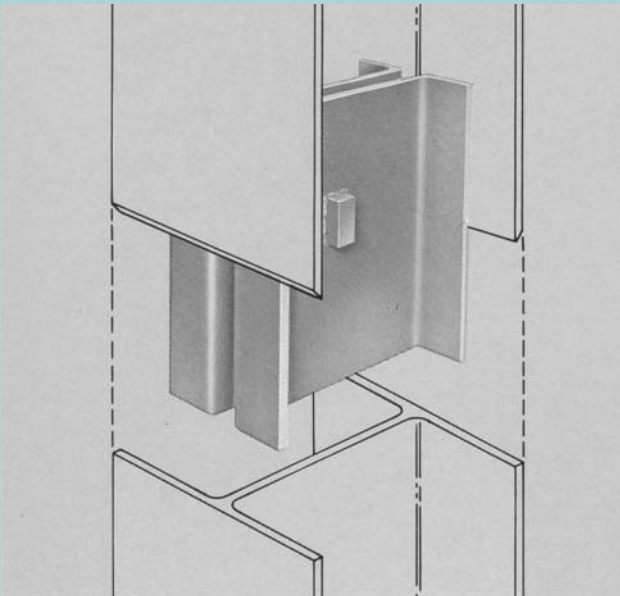


HP 300 H-PILE SPLICE

*DFP's HP 300 H-Pile
Splice Helps You
Get The Job Done
Quickly, Easily, and
Economically.*



DFP
Foundation Products, LLC



DFP HP 300 H-PILE SPLICE

Splice H-Piles Better, Faster and for Less Money

EFFICIENT ON-SITE ATTACHMENT

You can attach the HP 300 to extension pile in advance – while you're driving the lower section. Only minimal welding is required. Simply notch one pile end to accept the HP 300's high strength spacer bar, and slide the splice into position (a hand held hammer may be necessary, since the splice is made to very close tolerances). Complete the attachment by welding along the web and at the lower corners of the splice.

SUPERIOR STRENGTH

This type of splicer for H-pile is clearly superior to butt welding for overall strength and alignment of pile ends. The HP 300 is also preferred over welding plates to the inside surfaces of the pile for the same reasons.

A MUST FOR BATTER PILES

The HP 300's superior strength and method of attachment make it the only safe and effective choice for splicing batter piles.

FAST ATTACHMENT

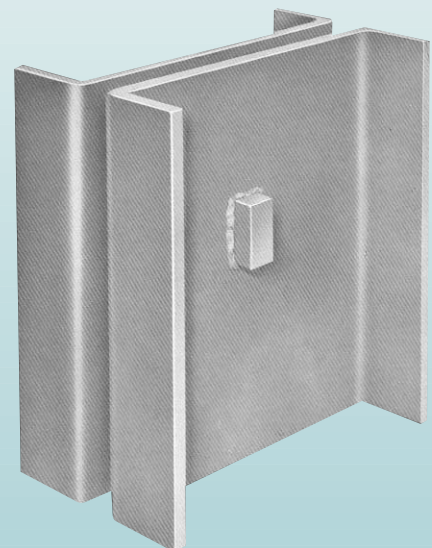
The HP 300 is designed to make a quality splice, and make it in a hurry...with little margin for error. You'll save time compared to butt welding or plate welding (so you'll save money). And it's easy to attach, (so you'll get the job done right).

USE SHORTER LENGTHS

In many situations, it may be advantageous to use shorter pile sections (e.g., transportation limitations, lead size, low overhead clearance, etc.). The HP 300 makes it fast and easy to connect short piles.

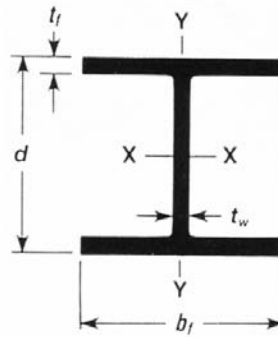
ORDERING INFORMATION

The HP 300 Splice is available for 10, 12, and 14 inch H-piles (be sure to specify pile weight per foot when ordering). Special sizes are also available and can be made for wide flange beams as well as H-piles. Contact DFP Foundation Products for details and ordering information.



HP SHAPES

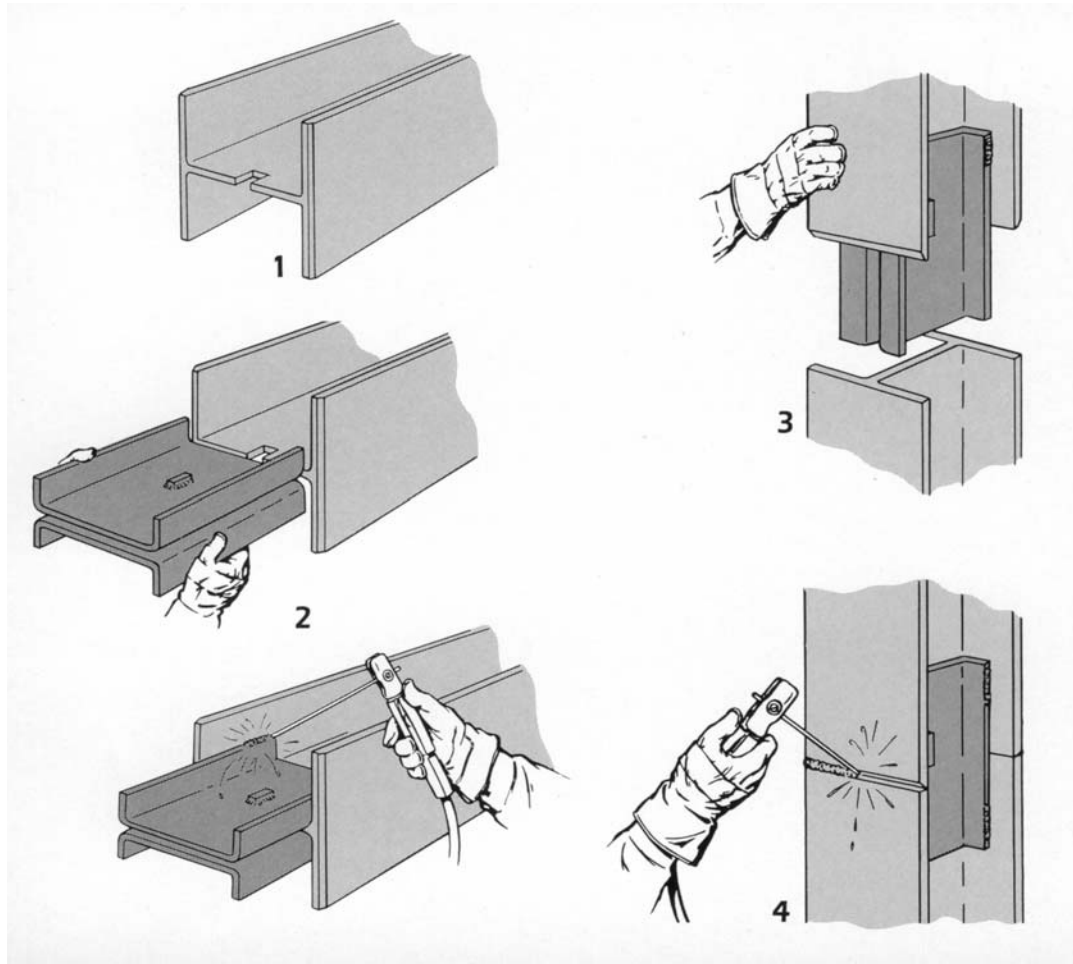
Properties for Designing



						Welding Required for HP-300	
Designation	Area A In. ²	Depth d In.	Flange		Web	Splicer Flange Weld Using DFP HP-300 Partial GrooveWeld	Corner Weld On Splice to Flange (8x)
			Width b_f In.	Thickness t_f In.	Thickness t_w In.		
HP 14X117	34.4	14.21	14.885	0.805	0.805	1/2"	3/8" X 3"
HP 14X102	30.0	14.01	14.785	0.705	0.705	1/2"	3/8" X 3"
HP 14X89	26.1	13.83	14.695	0.615	0.615	1/2"	3/8" X 3"
HP 14X73	21.4	13.61	14.585	0.505	0.505	1/2"	3/8" X 3"
HP 12X84	24.6	12.28	12.295	0.685	0.685	3/8"	5/16" X 3"
HP 12X74	21.8	12.13	12.215	0.610	0.605	3/8"	5/16" X 3"
HP 12X63	18.4	11.94	12.125	0.515	0.515	3/8"	5/16" X 3"
HP 12X53	15.5	11.78	12.045	0.435	0.435	3/8"	5/16" X 3"
HP 10X57	16.8	9.99	10.225	0.565	0.565	5/16"	5/16" X 2-1/2"
HP 10X42	12.4	9.70	10.075	0.420	0.415	5/16"	5/16" X 2-1/2"

HP 300 H-PILE SPLICE

Details of Assembly



HP 300... EASY TO USE

1. Notch the end of upper length of H-pile (to accommodate the HP 300 spacer bar).
2. Fit the HP 300 splice over notched end of H-pile, and weld corners.
3. Place the upper section into position onto the lower section.
4. To complete the splice, weld along the outside of the flanges and along the lower corners of the splice.

DFP

Foundation Products, LLC

PO Box 688 • Franklin Lakes, NJ 07417-0688
 201-337-5748 • fax: 201-337-9022 • www.pileline.com